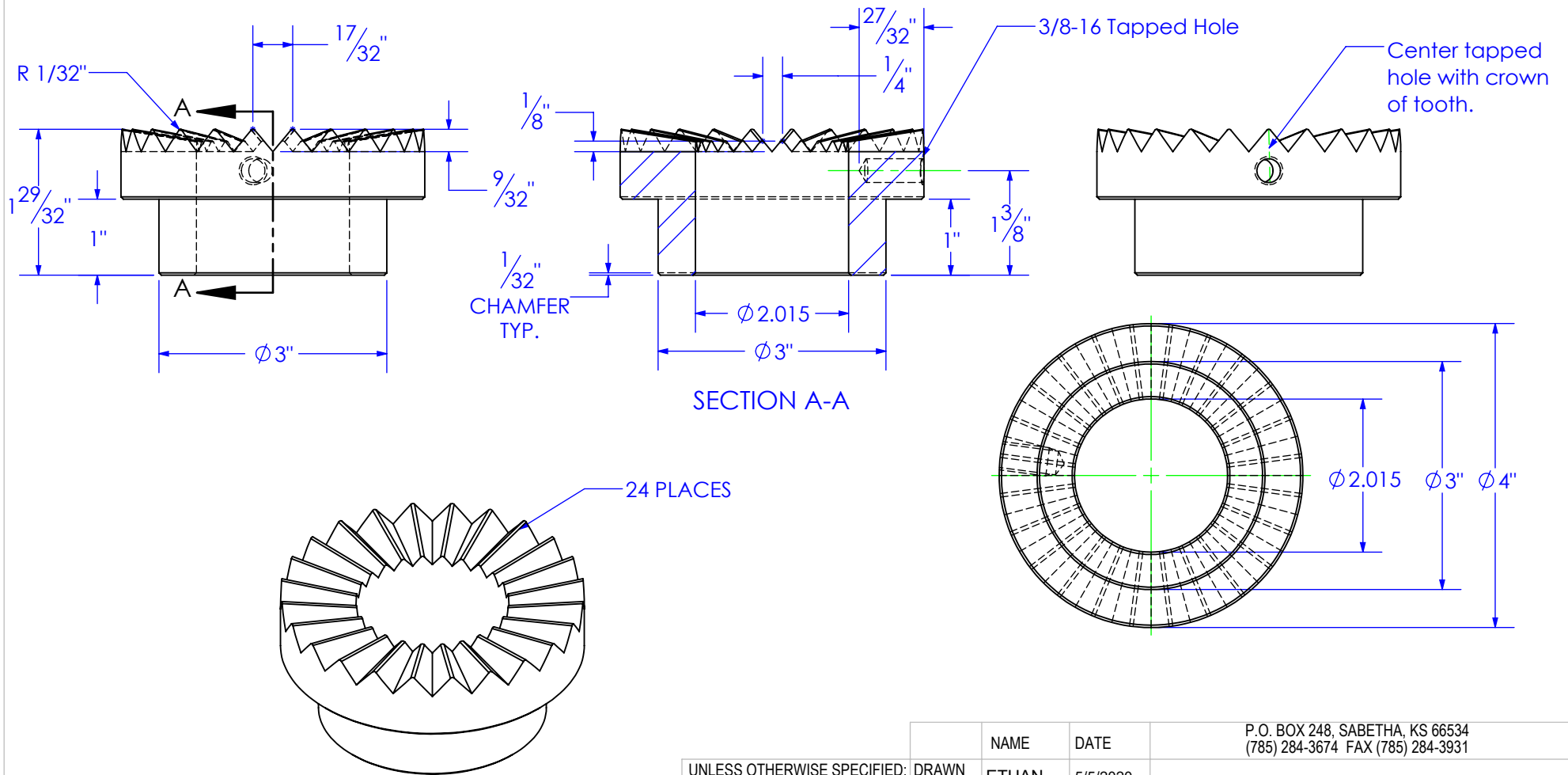



REVISIONS			
REV.	DESCRIPTION	DATE	APPROVED
A	INITIAL RELEASE	4/19/2019	
B	ADD TAPPED HOLE	7/2/2019	
C	INCREASE BORE DIAMETER	1/13/2020	
D	ADD NOTE FOR TAPPED HOLE	5/5/2020	



PROPRIETARY AND CONFIDENTIAL
THE INFORMATION CONTAINED IN THIS
DRAWING IS THE SOLE PROPERTY OF TRIPLE
C INC. ANY REPRODUCTION IN PART OR
AS A WHOLE WITHOUT THE WRITTEN
PERMISSION OF TRIPLE C, INC IS PROHIBITED.

UNLESS OTHERWISE SPECIFIED:
DIMENSIONS ARE IN INCHES
TOLERANCES:
FRACTIONAL $\pm 1/16$
ANGULAR: MACH ± 1 BEND \pm
TWO PLACE DECIMAL ± 010
THREE PLACE DECIMAL ± 005

MATERIAL ST-MT 4x2
DO NOT SCALE DRAWING

	NAME	DATE	P.O. BOX 248, SABETHA, KS 66534 (785) 284-3674 FAX (785) 284-3931		
D: DRAWN	ETHAN	5/5/2020			
PART #	FP-HF8-SCR INNER				
ASM #	Asm #				
COMMENTS:					
SLIP CLUTCH RATCHET, INNER, HYDRA FIGURE 8			SIZE	DWG. NO.	REV
			A	12-2487	D
			SCALE: 1:2	WEIGHT: 3.06	SHEET 1 OF 1